

**BOARD OF PUBLIC WORKS
MEMBERS**

AURA GARCIA
PRESIDENT

M/ TERESA VILLEGAS
VICE PRESIDENT

DR. MICHAEL R. DAVIS
PRESIDENT PRO TEMPORE

VAHID KHORSAND
COMMISSIONER

SUSANA REYES
COMMISSIONER

CITY OF LOS ANGELES

CALIFORNIA



ERIC GARCETTI
MAYOR

**OFFICE OF THE
BOARD OF PUBLIC WORKS**

DR. FERNANDO CAMPOS
EXECUTIVE OFFICER

200 NORTH SPRING STREET
ROOM 361, CITY HALL
LOS ANGELES, CA 90012

TEL: (213) 978-0261
TDD: (213) 978-2310
FAX: (213) 978-0278

<http://bpw.lacity.org>

October 12, 2022

Council Hearing – 10/18/2022
Council File No. 22-0900-S45

City Council
Room No. 395
City Hall

Honorable Members:

ASSESSMENT HEARING # 7 – SEPULVEDA STREET AND GRAND AVENUE CDBG

Inasmuch as no one protested the assessments pursuant to the hearing scheduled this date, in connection with the maintenance for Sepulveda Street and Grand Avenue CDBG- Street Lighting Maintenance Assessment District, the Board of Public Works recommends that the assessments therefore be confirmed.

Sincerely,

DR. FERNANDO CAMPOS,
Executive Officer, Board of Public Works

FC:ch/lc

CC: Director, Bureau of Street Lighting



**DEPARTMENT OF PUBLIC WORKS
BUREAU OF STREET LIGHTING**

BPW-2022-0662

3226

DATE JUN 08 2022

C.D. 15

Honorable City Council
of the City of Los Angeles

**SEPULVEDA STREET & GRAND AVENUE CDBG
STREET LIGHTING MAINTENANCE ASSESSMENT DISTRICT**

This report submits the proposed Ordinance of Intention to institute maintenance assessment proceedings for the above street lighting project.

RECOMMENDATIONS

1. Council adopt this report and the Ordinance of Intention, and that the proceedings be conducted in accordance with Sections 6.95 - 6.127 of the Los Angeles Administrative Code, Section 53753 of the California Government Code, and Proposition 218 (Articles XIII C and XIII D of the California Constitution). This includes Council holding a Public Hearing for the proposed District Diagram with City page number 15689.
2. Upon Council adoption of the Ordinance of Intention, the Bureau of Street Lighting be instructed to: Mail notices of the assessment ballot proceedings, and Mail assessment ballots (as required by Prop. 218) to the property owners in the lighting district.
3. Upon completion of Item 2 above, the City Clerk be instructed to conduct the assessment ballot proceedings (i.e. count, certify, and report the results of the assessment ballot proceedings to the Council).
4. Following the conclusion of the final public hearing, if a project has weighted "YES" votes equal to, or in excess of weighted "NO" votes, the Council shall deny the appeals, confirm the maintenance assessments, and adopt the Final Ordinance levying the assessments. If the weighted "NO" votes are in excess of weighted "YES" votes, Council will abandon the lighting district and proceedings in accordance with Proposition 218; and the affected street lighting system shall be removed from service or not be constructed.
5. A copy of this report be provided to each affected Council office and the Mayor's Office of Economic Development.

The passage of Proposition 218 on November 5, 1996, requires a vote of the property owners prior to Council confirming and levying the assessments for maintenance. Upon adoption of the transmitted Ordinance of Intention, the Council shall set a date for hearing appeals and the last day to receive completed assessment ballots. A hearing to be held by the Board of Public Works will be scheduled at least one week prior to the date of the public hearing for the City Council to review and resolve any appeals concerning the proposed maintenance assessments – as specified in the Engineer's Report. If the assessment ballot proceeding as required by Proposition 218 approves these assessments, the City Council may confirm and levy the assessments. If levied, the administration of this district may be combined with that of another district or districts in the future as provided in the Ordinance of Intention. Protests that are received, as described in the Administrative Code, are for the consideration of the Council, but are not binding. Only a weighted majority vote against the assessment is binding.

The assessments to be levied to pay for the cost and expenses of the work or improvements in the proposed SEPULVEDA STREET & GRAND AVENUE CDBG Street Lighting Maintenance Assessment District (or Sidewalk Maintenance Assessment District) fall within the (e)7 exemption of Prop 26. As set forth in the accompanying Ordinance of Intention, said assessments will be imposed in accordance with the provisions of Article XIID of the California Constitution.

In accordance with Council Policy adopted on December 11, 1998, the Bureau of Street Lighting will cast ballots in favor of the assessments for all Council controlled public properties in the district.

SUMMARY

TOTAL STREETLIGHTS:	24
AFFECTED PARCELS:	103
TOTAL ASSESSMENTS:	\$ 11,762.81
TAX YEAR:	2022/2023
TYPE OF PROJECT:	COMMUNITY DEVELOPMENT BLOCK GRANT (CDBG)

TRANSMITTALS

1. Ordinance of Intention, approved as to form and legality by the City Attorney, for the proposed assessment district.
2. Engineer's Report as required by Proposition 218.
3. Proposed assessment roll.
4. Diagram delineating those lands proposed to be assessed.

Report prepared by:
Assessment Engineering Division
Proposition 218 Compliance Section
L. Dam, Street Lighting Engineering Associate II
Ruben Flamenco, P.E., Division Manager

Respectfully submitted,


Miguel Sangalang, Executive Director
Bureau of Street Lighting

LAND USE METHOD



SCALE.
1"=100'

PRIOR TO THE FOLLOWING DATES THE LISTED
PARCELS WERE ASSESSED UNDER THE REFERENCE
NUMBERS AS SHOWN:

DATE _____ PARCEL NO. _____ PREVIOUS REFERENCE
DIST. PAGE PARCEL

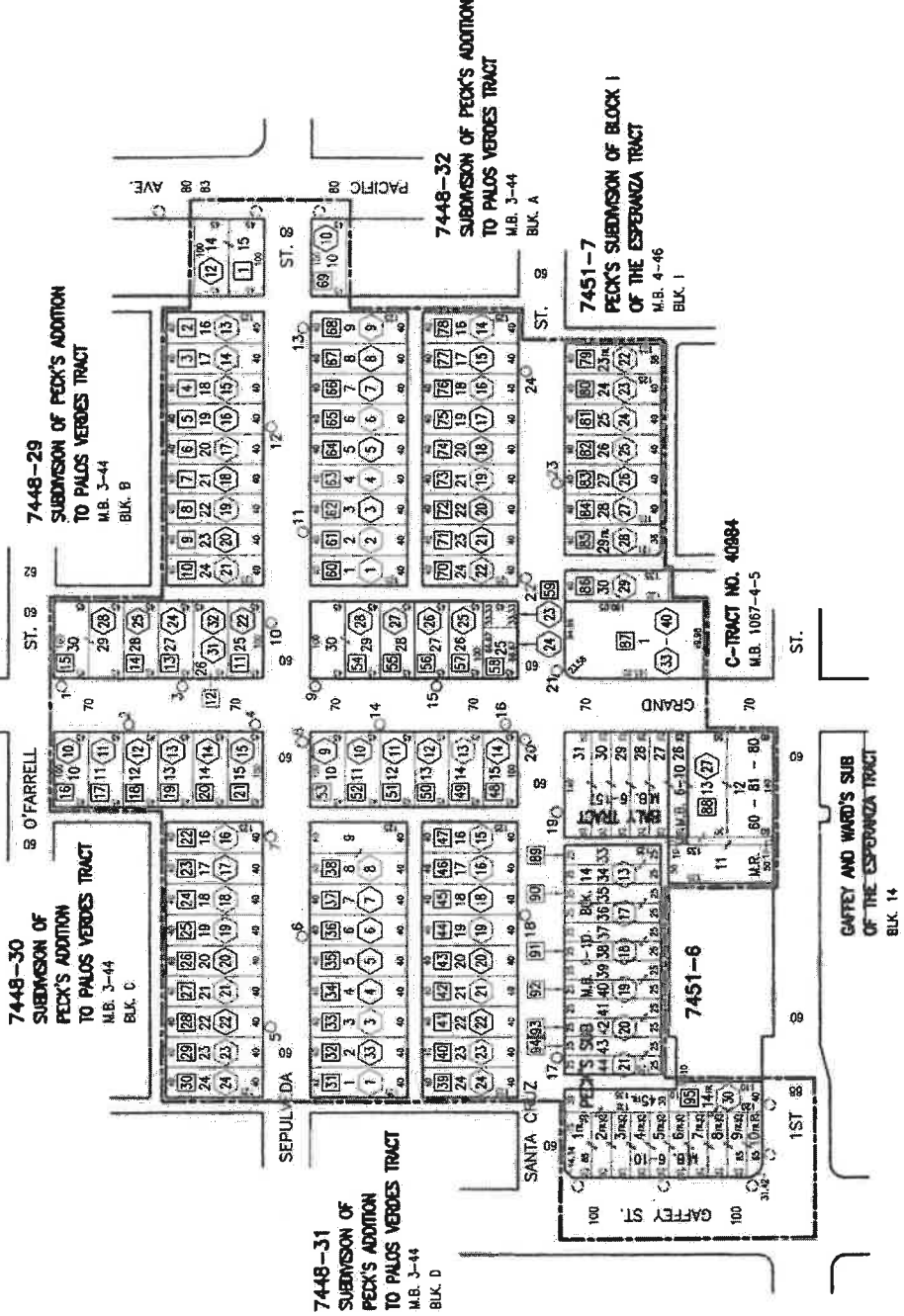
COUNCIL DISTRICT NO. 15
PROJECT ID NO. 5404

7448 24.503.32
7651 43

DISTRICT OUTLINED BY *[Signature]*
DISTRICT CHECKED BY *[Signature]*
APPROVED MAY 19 2022
Kerney R. Morris, Jr. Assistant Director
Bureau of Street Lighting

By *[Signature]*
Bureau of Street Lighting

In. Ser.	Date	By	Initials
1-2-22	5/19/22	[Signature]	[Signature]
Checked	By	Initials	Page
418	Thomas	48	1 of 1



- ① Indicate L.A. County APN
- ② Indicate L.A. City Assessment Number
- ③ Indicate New Electrolines... 8.2.2
- ④ Indicate New Electrolines... 8.2
- ⑤ Indicate New Electrolines... 8.2
- ⑥ Indicate New Electrolines... 8.2
- ⑦ Indicate New Electrolines... 8.2

MAINTENANCE ASSESSMENT DIAGRAM
FOR PROPOSITION 218 REQUIREMENTS
SHOWING LOCATION OF ELECTROLINES AND THE
EXTENT OF THE TERRITORY INCLUDED WITHIN THE
ASSESSMENT DISTRICT
FOR THE TURNING OF ELECTRIC ENERGY & MAINTENANCE FEE
THE LOCATION OF SAID DISTRICT IN THE CITY OF LOS ANGELES
KERNY R. MORRIS, JR., ASSISTANT DIRECTOR - BUREAU OF STREET LIGHTING
THE DISTRICT BOUNDARY IN THE ATTACHED MAP IS SHOWN.

SEPULVEDA ST. & GRAND AVE. CDBG L.D. 15689